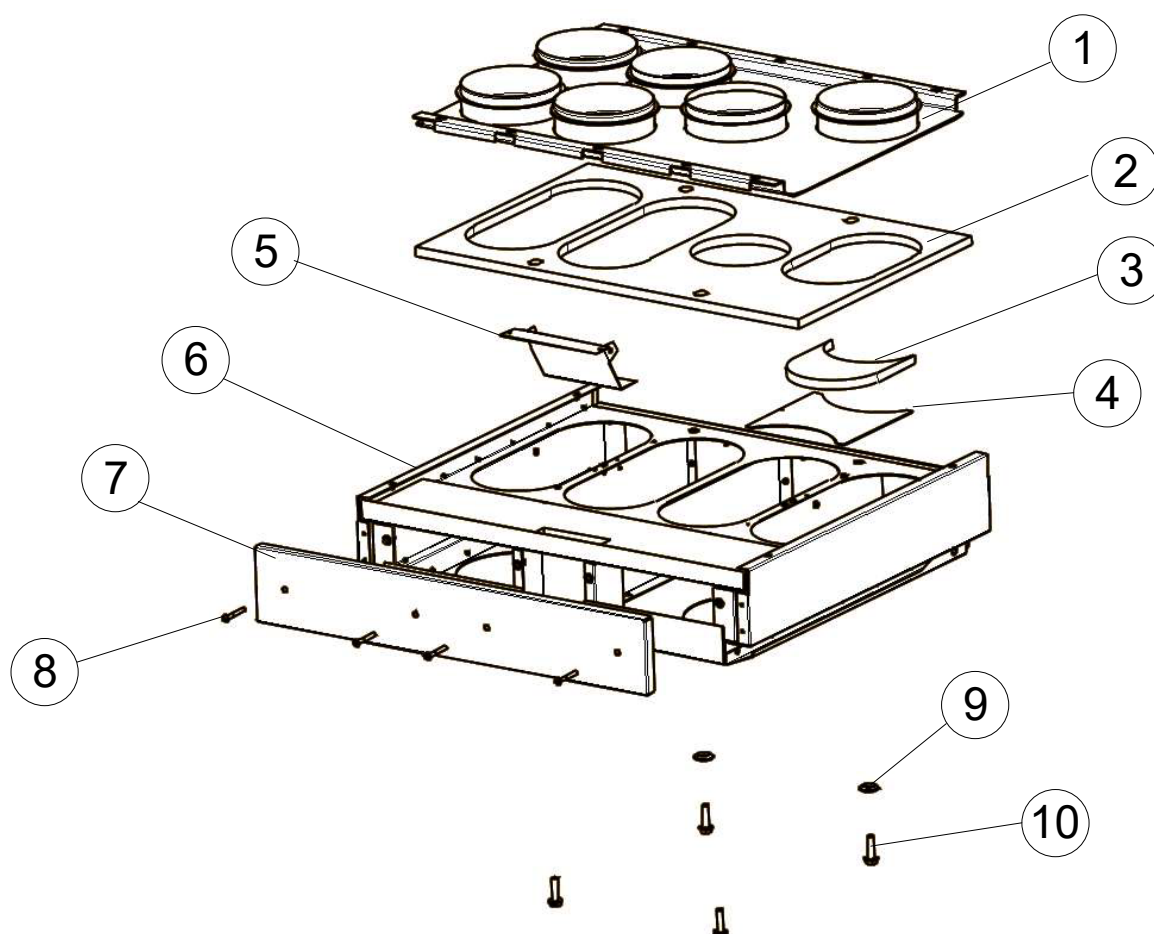


Renovation adapter

Installation instructions



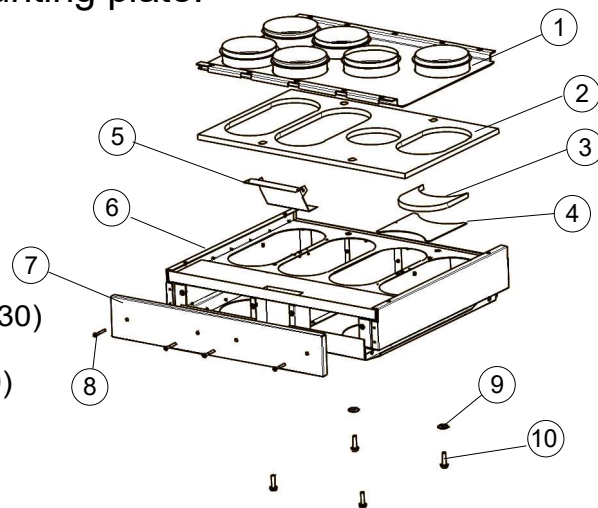
1. Ceiling mounting plate
2. Cover insulation
3. Cover plate insulation
4. Duct cover plate
5. Air flow controller
6. Adapter
7. Front plate
8. Front panel mounting screws
9. Masking plugs for mountings holes
10. Fastening bolts for adapter

Attaching the renovation adapter to the ceiling mounting plate:

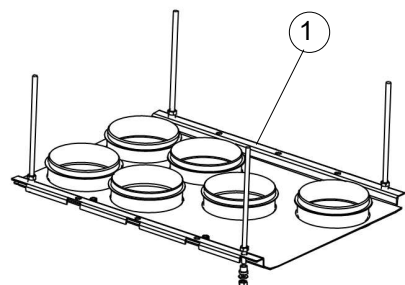
1. Ceiling mounting plate
2. Cover insulation
3. Cover plate insulation
4. Duct cover plate
5. Air flow controller
6. Adapter
7. Front plate
8. Front panel mounting screws (M5x30)
9. Masking plugs for mountings holes
10. Fastening bolts for adapter (M8x40)

The necessary tools:

- Crosshead screwdriver
- M13 -socket 1/4" (magnetic)
- Extension arm 1/4"

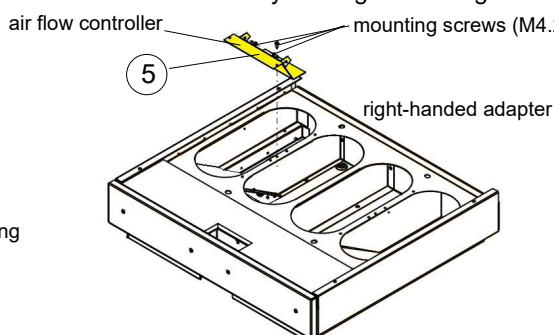


1. Attach the ceiling mounting plate (1) to the ceiling according to the installation instructions of the ceiling mounting plate.

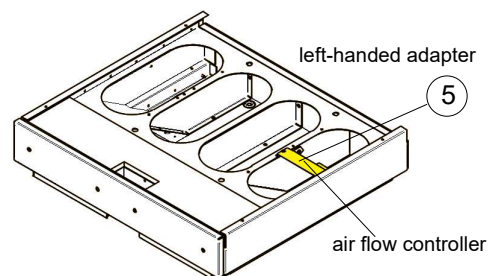


Picture 1. Installation of the ceiling mounting plate

2. Before installing the adapter, check that the handedness of the adapter matches the handedness of the ventilation machine. The adapter is delivered right-handed. Handedness can be changed to left-handed by removing the air flow controller (5) and by moving it to the right side of the adapter (see pictures 2a and 2b).

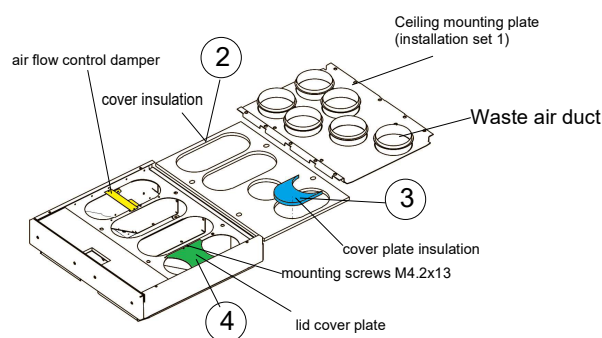


Picture 2a. Installation of the air flow controller in the right-handed adapter.

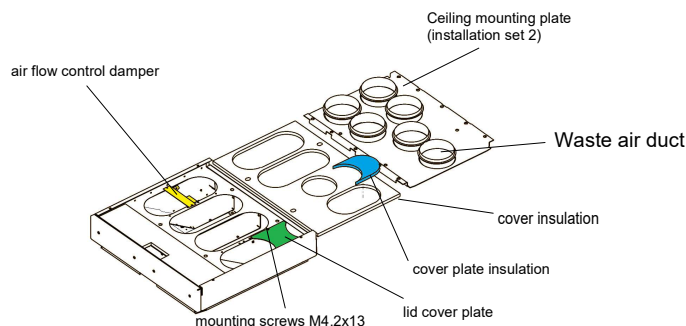


Picture 2b. Installation of the air flow controller in the left-handed adapter.

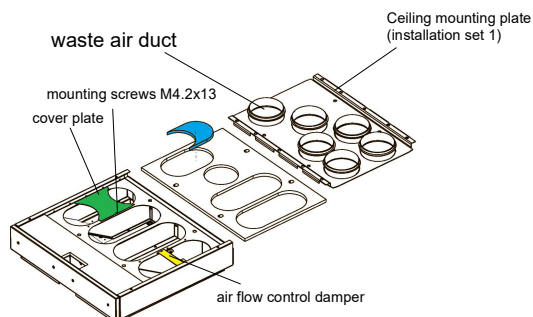
3. Install the cover plate (4) that comes with the adapter depending on the ceiling mounting plate option and the handedness of the adapter. Put the cover insulator (2) in place according to handedness and glue the insulation of the cover plate (3) to the cover plate (4). Check that the flow of air to the waste air duct remains unobstructed (see pictures 3a-d).



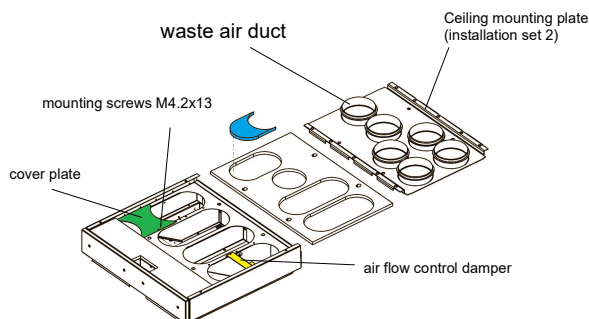
3a. Cover plate and insulation installation, right-handed adapter installation kit 1



3b. Cover plate and insulation installation, right-handed adapter installation kit 2

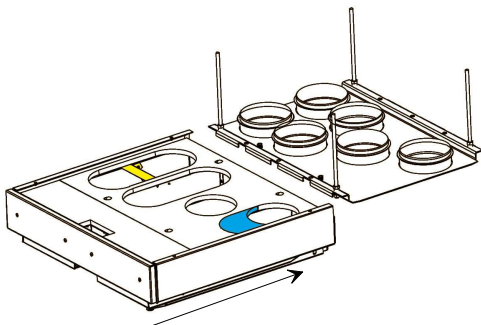
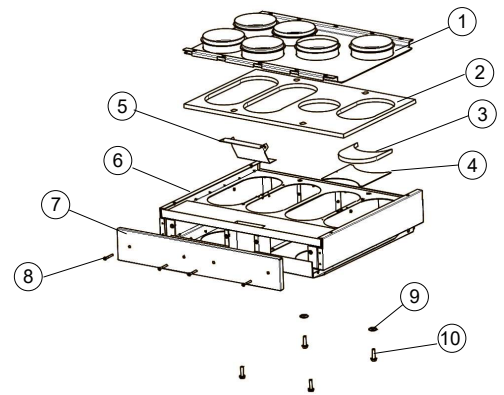


3c. Cover plate and insulation installation, left-handed adapter installation kit 1

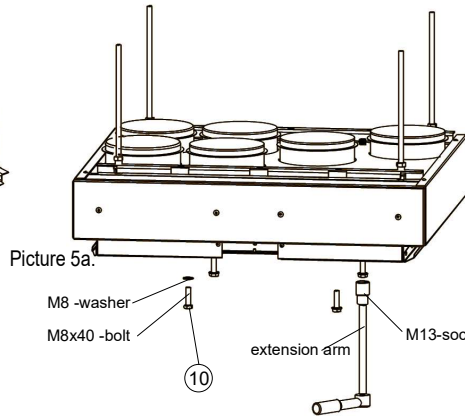


3d. Cover plate and insulation installation, left-handed adapter installation kit 2

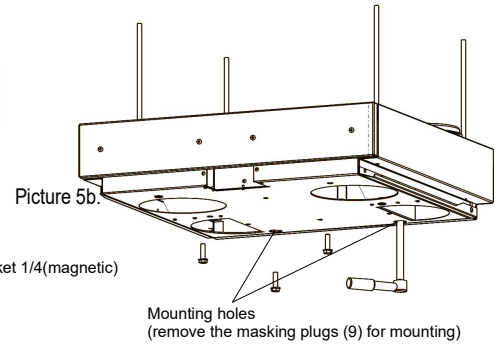
1. Ceiling mounting plate
2. Cover insulation
3. Cover plate insulation
4. Duct cover plate
5. Air flow controller
6. Adapter
7. Front plate
8. Front panel mounting screws (M5x30)
9. Masking plugs for mountings holes
10. Fastening bolts for adapter (M8x40)



Picture 4. Adapter installation



Picture 5a.

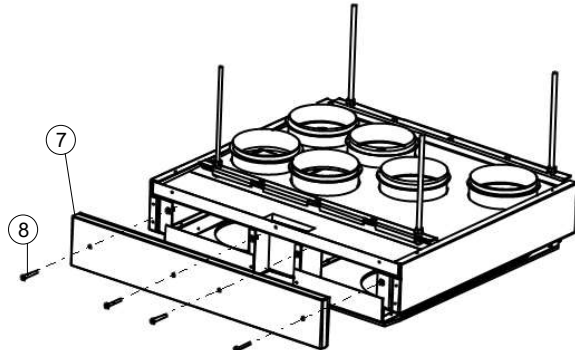


Picture 5b.

4. The Adapter is inserted into the ceiling mounting plate.

5. The adapter is attached to the ceiling mounting plate from below with four M8x40-bolts (10) with washers (picture 5a). Fastening takes place from the front through duct opening and from the back through the mounting holes (picture 5b). The bolts are tightened so that the ceiling mounting plate seals evenly against the cover insulation of the adapter, not tighter.

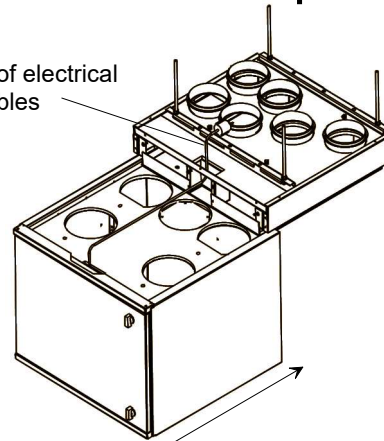
Attaching the ventilation unit to the adapter:



Picture 6. Removing the front panel

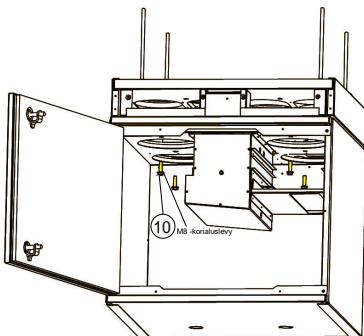
6. Remove the front plate (7) of the adapter by loosening the four fastening screws (8).

Feed-through of electrical and control cables



Picture 7. Installation of the ventilation machine

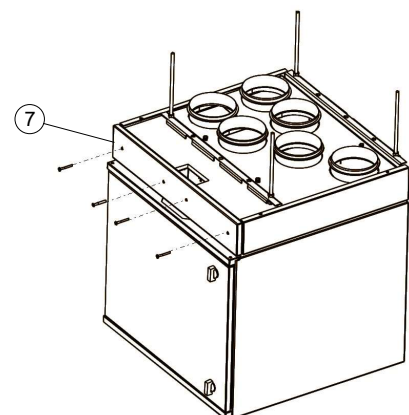
7. The ventilation machine is pushed into the adapter and the electrical and control cables are threaded through the opening of the adapter feed-through at the same time (picture 7).



Picture 8. Fixing the ventilation machine

8. The ventilation machine is attached to the adapter from the inside of the machine with four **M8x30** bolts (10) with the washers so that the insulation of the machine cover seals evenly against the adapter, not tighter.

Pay special attention to the fact that the front bolts are not too tight, so that the rear edge of the adapter also seals evenly.
For more information, see the user manual of the ventilation unit.



Picture 9. Attaching the front plate of the adapter.

9. Fasten the front plate (7) of the adapter back in place.

Installing the renovation adapter on the wall bracket

WALL MOUNTING

The installation kit includes a ceiling mounting plate, a wall bracket and 15 mm thick insulation pieces.

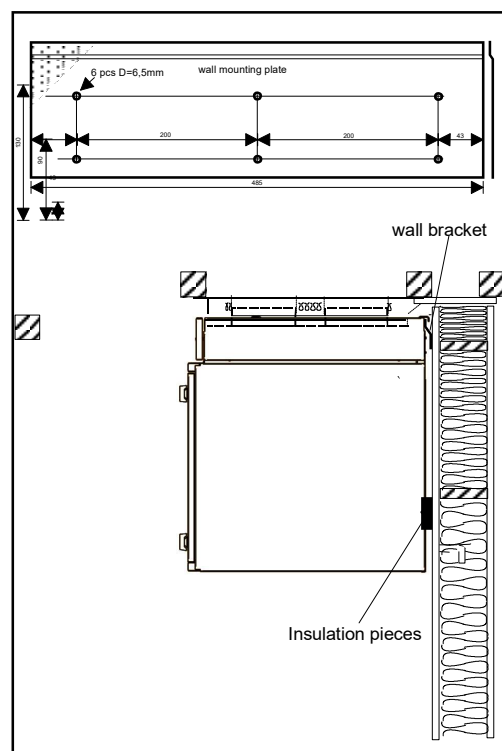
The ceiling mounting plate is attached to the renovation adapter.

The adapter is attached to the ventilation machine and the insulation pieces are glued to the back wall of the machine, at the bottom edge.

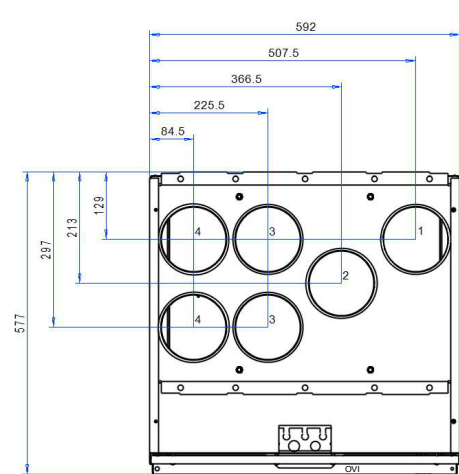
The wall mounting plate is installed approx. 25 mm below the ceiling surface.

After installing the wall mounting plate, the ventilation unit is lifted with the adapter onto the mounting plate, the horizontality of the machine is checked.

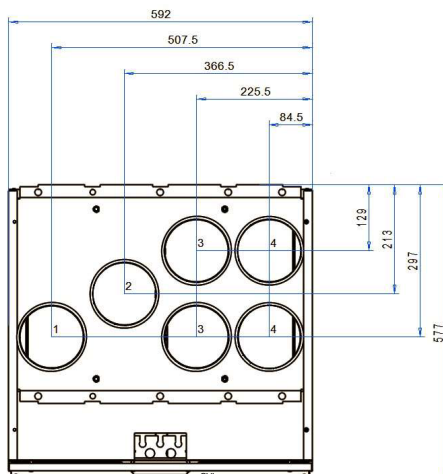
If necessary, ceiling moldings can be placed on the top edge of the machine.



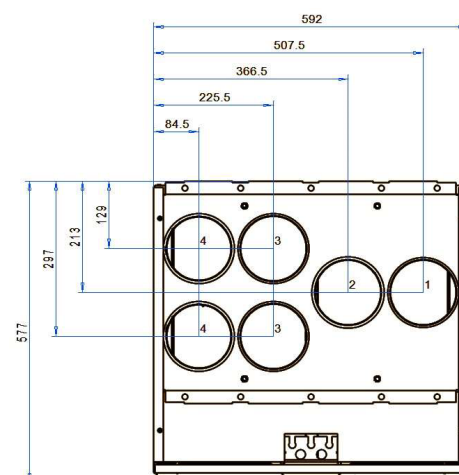
Picture 10. Installing the adapter on the wall bracket



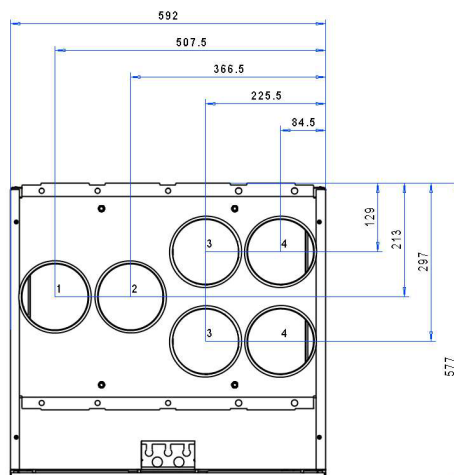
Installation kit 1, right-handed (R)



Installation kit 1, left-handed (L)



Installation kit 2, right-handed (R)



Installation kit 2, left-handed (L)

Channel outputs:

1. Waste air duct
2. Outdoor air duct
3. Exhaust air duct
4. Supply air duct